

# A3500 Raccord à souder Welded nut and pipe

## ■ Fonction

Raccord à souder permettant le montage des instruments ou accessoires en 1/2"GM (suivant ISO228), comprenant : écrou, douille à souder et joint d'étanchéité.

## ■ Caractéristiques

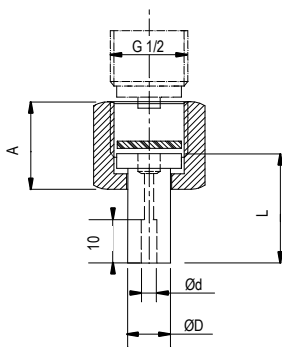
<b>Ecrou</b>	① Inox 316L ④ Acier
<b>Douille à souder</b>	② Inox 316L (PN250) ⑤ Laiton (PN250) ⑦ Acier zingué (PN250) ⑧ Acier (PN250)
<b>Joint plat</b>	③ P.T.F.E (0...+150°C) ⑥ N.B.R. (-20...+100°C) ⑨ Cuivre (- 30...+ 300°C)
<b>Option</b>	Dégraissage pour oxygène

## ■ Function

Welded nut & pipe for instruments or accessories 1/2"GM (BSP) according to ISO 228 including : O' ring, nut and pipe to be welded.

## ■ Technical data

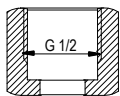
<b>Nut</b>	① 316L st.st. ④ Steel
<b>Pipe to be welded</b>	② 316L st.st. (PN250) ⑤ Brass (PN250) ⑦ Zinc plated steel (PN250) ⑧ Steel (PN250)
<b>Flat gasket</b>	③ P.T.F.E (0...+150°C) ⑥ N.B.R. (-20...+100°C) ⑨ Copper (- 30...+ 300°C)
<b>Option</b>	Oxygen cleaning



	Type	Ød	ØD	L	A	Code
RMX1	① + ② + ③	4	11.9	30	24	<b>A3500-010</b>
RM1	④ + ⑤ + ⑥					<b>A3500-020</b>
RM1	④ + ⑦ + ⑧					<b>A3500-030</b>
RM1	④ + ⑧ + ⑨	4	11.9	30	30	<b>A3500-031</b>



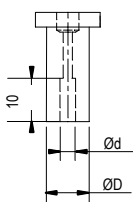
	Type	Ød	ØD	L	A	Code
RMX1	① + ② + ③	6.1	11.9	30	24	<b>A3500-040</b>
RM1	④ + ⑤ + ⑥					<b>A3500-050</b>
RM1	④ + ⑦ + ⑧					<b>A3500-060</b>



<b>Ecrou 1/2"GF Nut 1/2"GF</b>	Inox 316L / 316L st.st.	<b>A3500-100</b>
	Acier / Steel	<b>A3500-101</b>



<b>Joint (lot de 10) pour instrument G 1/2"</b>  <b>Gasket ( by batch of 10) for G1/2" instrument</b>	P.T.F.E (0...+150°C)	<b>A3500-200</b>
	N.B.R. (-20...+100°C)	<b>A3500-201</b>
	F.K.M. (0...+120°C)	<b>A3500-202</b>
	E.P.D.M. (-40...+120°C)	<b>A3500-203</b>



	Matière / Material	Ød	ØD	Code
<b>Douille à souder Pipe to be welded</b>	Laiton Brass	4	11.9	<b>A3500-300</b>
		6.1		<b>A3500-301</b>
		8.1		<b>A3500-302</b>
	Inox 316L 316L st.st.	4	11.9	<b>A3500-400</b>
		6.1		<b>A3500-401</b>
		8.1		<b>A3500-402</b>

