

### ■ Utilisation

Protège l'élément sensible de l'instrument de mesure ou de contrôle des fluides agressifs, corrosifs, gazeux ou liquides, pâteux ou coagulants, et compatibles avec les matériaux constitutifs.

L'instrument forme avec son séparateur un ensemble non dissociable.

### ■ Uses

Protect sensing element on the measurement or control instrument from corrosive, gaseous or liquid but, or coagulant media and compatible with wetted parts.

Removing the seal from the pressure instrument is prohibited

### ■ Caractéristiques

|  |                                  |
|--|----------------------------------|
| <b>Flasque supérieur</b>               | Inox 316L                        |
| <b>Membrane</b>                        | Inox 316L, soudée                |
| <b>Flasque inférieur</b>               | Inox 316L                        |
| <b>Visserie</b>                        | Inox 304                         |
| <b>Etanchéité</b>                      | Joint PTFE                       |
| <b>Raccordement pression par bride</b> |                                  |
|  | Suivant ISO/DIN 7005 (NFE 29203) |
|  | Suivant ANSI B16-5               |

### ■ Technical data

|   |  |
|---|--|
| <b>Upper part</b>                             | 316L st.st                                     |
| <b>Diaphragm</b>                              | 316L st.st, welded                             |
| <b>Lower part</b>                             | 316L st.st                                     |
| <b>Screws</b>                                 | 304 st.st                                      |
| <b>Sealing</b>                                | PTFE gasket                                    |
| <b>Process connection standardized flange</b> |  |
|   | According to ISO/DIN 7005 standard (NFE 29203) |
|   | According to ANSI B16-5 standard.              |

### ■ Options

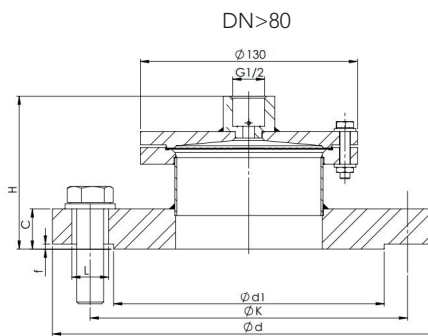
|                          |  |
|--------------------------|--|
| <b>Membrane</b>          | Inox revêtu PTFE, tantale, monel 400, hastelloy C276, uranus B6, inox revêtu or etc. |
| <b>Flasque inférieur</b> | inox doublé PTFE, monel 400, PVC, PVDF, hastelloy C276, ...                          |
| <b>Visserie</b>          | Inox 316L  |

### ■ Options

|                   |  |
|-------------------|--|
| <b>Diaphragm</b>  | St.st. + PTFE, tantalum, monel 400, hastelloy C276, uranus B6, st.st. with gold coating, ... |
| <b>Lower part</b> | st.st. + PTFE, monel 400, PVC PVDF, hastelloy C276, ...                                      |
| <b>Screws</b>     | 316L st.st   |

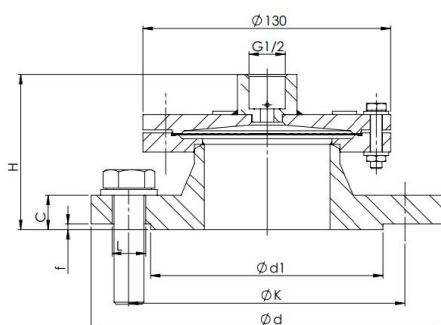
## S773A

### ■ Dimensions (mm)



DN > 80

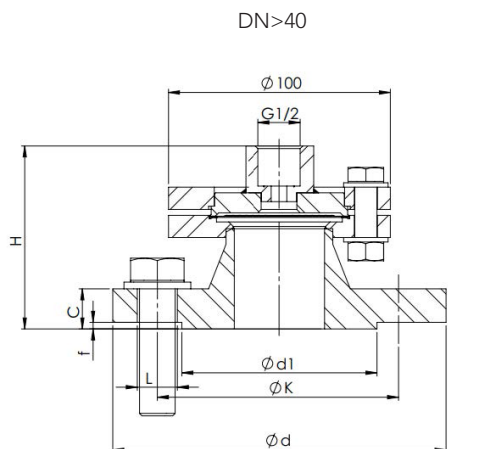
\* Le raccordement entre la partie supérieure et la bride normalisée sera par un tube à souder.



|       | PN  | DN  | d   | k  | L | f | C  | d1  | H  | Trous holes |
|-------|-----|-----|-----|----|---|---|----|-----|----|-------------|
| 10/16 | 15  | 95  | 65  | 14 | 2 | 2 | 16 | 45  | 75 | 4x M12      |
|       | 20  | 105 | 75  | 14 | 2 | 2 | 18 | 58  | 77 | 4x M12      |
|       | 25  | 115 | 85  | 14 | 2 | 2 | 18 | 68  | 77 | 4x M12      |
|       | 32  | 140 | 100 | 18 | 2 | 2 | 18 | 78  | 79 | 4x M16      |
|       | 40  | 150 | 110 | 18 | 3 | 3 | 18 | 88  | 82 | 4x M16      |
|       | 50  | 165 | 125 | 18 | 3 | 3 | 18 | 102 | 82 | 4x M16      |
|       | 65  | 185 | 145 | 18 | 3 | 3 | 18 | 122 | 82 | 8x M16      |
| 25/40 | 80  | 200 | 160 | 18 | 3 | 3 | 20 | 138 | 87 | 8x M16      |
|       | 100 | 220 | 180 | 18 | 3 | 3 | 20 | 158 | 88 | 8x M16      |
|       | 15  | 95  | 65  | 14 | 2 | 2 | 16 | 45  | 75 | 4x M12      |
|       | 20  | 105 | 75  | 14 | 2 | 2 | 18 | 58  | 77 | 4x M12      |
|       | 25  | 115 | 85  | 14 | 2 | 2 | 18 | 68  | 77 | 4x M12      |
|       | 32  | 140 | 100 | 18 | 2 | 2 | 18 | 78  | 79 | 4x M16      |
|       | 40  | 150 | 110 | 18 | 3 | 3 | 18 | 88  | 82 | 4x M16      |
|       | 50  | 165 | 125 | 18 | 3 | 3 | 20 | 102 | 85 | 4x M16      |
|       | 65  | 185 | 145 | 18 | 3 | 3 | 22 | 122 | 89 | 8x M16      |
|       | 80  | 200 | 160 | 18 | 3 | 3 | 24 | 138 | 95 | 8x M16      |
|       | 100 | 235 | 190 | 22 | 3 | 3 | 24 | 162 | 92 | 8x M20      |

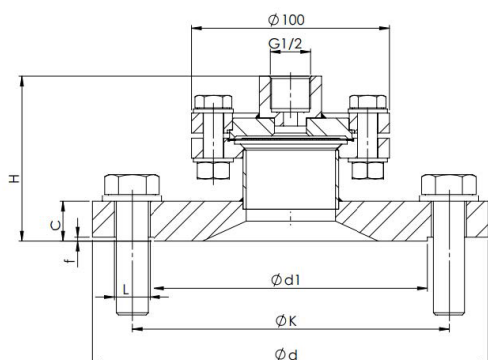
### ■ Dimensions (mm)

#### S633A



DN > 40

\* Le raccordement entre la partie supérieure et la bride normalisée sera par un tube à souder.



| PN    | DN    | d   | k   | L  | f  | C4 | d1  | Trous holes |
|-------|-------|-----|-----|----|----|----|-----|-------------|
| 10/16 | 15    | 95  | 65  | 14 | 2  | 16 | 45  | 4x M12      |
|       | 20    | 105 | 75  | 14 | 2  | 18 | 58  | 4x M12      |
|       | 25    | 115 | 85  | 14 | 2  | 18 | 68  | 4x M12      |
|       | 32    | 140 | 100 | 18 | 2  | 18 | 78  | 4x M16      |
|       | 40    | 150 | 110 | 18 | 3  | 18 | 88  | 4x M16      |
|       | 50    | 165 | 125 | 18 | 3  | 18 | 102 | 4x M16      |
|       | 65    | 185 | 145 | 18 | 3  | 18 | 122 | 8x M16      |
|       | 80    | 200 | 160 | 18 | 3  | 20 | 138 | 8x M16      |
|       | 100   | 220 | 180 | 18 | 3  | 20 | 158 | 8x M16      |
|       | 25/40 | 15  | 95  | 65 | 14 | 2  | 16  | 45          |
| 20    |       | 105 | 75  | 14 | 2  | 18 | 58  | 4x M12      |
| 25    |       | 115 | 85  | 14 | 2  | 18 | 68  | 4x M12      |
| 32    |       | 140 | 100 | 18 | 2  | 18 | 78  | 4x M16      |
| 40    |       | 150 | 110 | 18 | 3  | 18 | 88  | 4x M16      |
| 50    |       | 165 | 125 | 18 | 3  | 20 | 102 | 4x M16      |
| 65    |       | 185 | 145 | 18 | 3  | 22 | 122 | 8x M16      |
| 80    |       | 200 | 160 | 18 | 3  | 24 | 138 | 8x M16      |
| 100   |       | 235 | 190 | 22 | 3  | 24 | 162 | 8x M20      |
| 100   |       | 15  | 105 | 75 | 14 | 2  | 20  | 45          |
|       | 20    | 130 | 90  | 18 | 2  | 22 | 58  | 4x M16      |
|       | 25    | 140 | 100 | 18 | 2  | 24 | 68  | 4x M16      |
|       | 32    | 155 | 110 | 22 | 2  | 24 | 78  | 4x M20      |
|       | 40    | 170 | 125 | 22 | 3  | 26 | 88  | 4x M20      |
|       | 50    | 195 | 145 | 26 | 3  | 28 | 102 | 4x M24      |
|       | 65    | 220 | 170 | 26 | 3  | 30 | 122 | 8x M24      |
|       | 80    | 230 | 180 | 26 | 3  | 32 | 138 | 8x M24      |
|       | 100   | 265 | 210 | 30 | 3  | 36 | 162 | 8x M27      |

#### ISO

| PN          | DN  |
|-------------|---|
| 10/16/25/40 | 15 - 20 - 25 - 32 - 40                      |
| 10/16       | 50 - 65 - 80 - 100                          |
| 25/40       | 50 - 65 - 80 - 100                          |
| 20          | 15 - 20 - 25 - 32 - 40 - 50 - 65 - 80 - 100 |
| 50          | 15 - 20 - 25 - 32 - 40 - 50 - 65 - 80 - 100 |
| 100         | 15 - 20 - 25 - 32 - 40 - 50 - 65 - 80 - 100 |

#### ANSI B16-5

| class | DN                            |
|-------|-------------------------------|
| /     | /                             |
| /     | /                             |
| /     | /                             |
| 150 # | ½" - ¾" - 1" - 1" ½ - 2" - 3" |
| 300 # | ½" - ¾" - 1" - 1" ½ - 2" - 3" |
| 600 # | ½" - ¾" - 1" - 1" ½ - 2" - 3" |

#### faces de joint

Face plate  
 Face surélevée (FS)  
 Double emboîtement mâle (DEM) (large ou étroit)  
 Double emboîtement femelle (DEF) (large ou étroit)  
 Simple emboîtement mâle (SEM) (large ou étroit)  
 Simple emboîtement femelle (SEF) (large ou étroit)  
 Annulaire (RTJ)

#### flange facings

Flat face  
 Raised face (RF)  
 Tongue face (small or large)  
 Groove face (small or large)  
 Male face (small or large)  
 Female face (small or large)  
 Ring joint face (RTJ)